

Direct Links
to Canvas



Available on-line in your  canvas folder at <http://canvas.umn.edu/>

f2022 [Canvas Modules](#)
[Module 14](#)



Tim Roufs Inspecting Durians in Singapore Market, 2017

Anthropology of Food Week 14

What's
Happening?



Live Chat
Tuesday 7:00-8:00 p.m.

Questions /
Comments

Video
Explorations

Slides


Readings

*Discussion

Project
*Term Paper

Other
Assignments
REM: Course Survey

*Final Exam

(click links for details)
 = leave page

(optional)
For Fun Trivia

(optional)
Extra Credit

(optional)
Other

Items DUE this week:
*enter on-line
**upload file

What's Happening Week 14?

Something's fishy this week. And this week we'll see how, in *In Organics We Trust* and in our discussion on American Indian and Alaskan Native fishing and whaling rights.

And it's time to see the fruits of your research labors, and to see what you have in store for the final exam.

Your Term Paper and your *Question* for the Final Exam are due this week

And we'll also again contemplate those debates that have puzzled folks for at least two thousand years—as they pertain to food.

Dessert this week is chocolate, more specifically the European Union “Chocolate War” that lasted decades. This was a different sort of “Food Fight” than we saw in Week 9 . . .

In more recent times they have also had “The Sausage War” . . .

- [Brexit: Gibraltar looks to EU-UK 'sausage war' talks to secure supermarket supplies](#)
– [Sky News](#) (24 November 2021)
- [EU agrees three-month ceasefire with UK in "sausage war"](#) -- [Reuters](#) (30 June 2021)
- [Sausage war truce leaves EU and UK with much to chew on](#) -- [The Guardian](#) (30 June 2021)
- [Boris Johnson's 'Sausage War' Was Deadly Serious](#) -- [FP News](#) (23 June 2021)

And, speaking of fishy food fights, on and off over the years they have had “The Cod Wars” . . .

- [Cod Wars](#) -- [Wikipedia](#)

And a new fishy food feud began last fall . . .

- [Brexit fishing war erupts as UK hits back at 'disappointing' French demands](#)[🔗] – Express (24 November 2021)
- [France Vows to Keep Battling in Fishing Dispute With UK](#)[🔗] – U.S. News (21 November 2021)
- ['War of attrition!' British fishermen warn of decades of feuds with French over Brexit](#)[🔗] -- EXPRESS (14 July 2021)
 - [2021 Jersey dispute](#)[🔗] -- Wikipedia

As always Live Chat is at 7:00 p.m. on Tuesday, a handy time to ask questions about your Term Paper and the Final Exam. But if that time is not convenient, e-mail. . . .

(optional) **LIVE CHAT: MIDTERM EXAM / OPEN FORUM / OFFICE HOURS . . .**

[Contact Information](#)[🔗]

Tuesday, @ 7:00-8:00 p.m. (CDT)

“ZOOM”[🔗]

[click ↑ here]

or

e-mail anytime: <mailto:troufs@d.umn.edu>[🔗]

[click ↑ here]



Live Chat is optional.

VIDEO EXPLORATIONS WEEK 14 . . .

Real People . . . Real Places . . .

Videos for the Semester[↗](#)

▶ *In Organic We Trust*

(81 min., 2012)

UMD Library on-line streaming[↗](#)

[click ↑ here]

If you are off-campus use Virtual Private Network (VPN) connection

course viewing guide

WEEK 14 SLIDES . . .

Class Slides for the Semester[↗](#)

Review the Following Slide Decks

using the "slide show" mode:

(Yes, one more time before the Final Exam)

**Ask yourself, "How do these characteristics
relate to my Term Paper and Presentation?"**

(WebSite with Links)[↗](#)

[click ↑ here]

Main Characteristics of Anthropology

[WebPage Summary](#)

week 2: **1 The four fields of anthropology** ([.pptx](#))

week 3: **2 culture** as a primary concept ([.pptx](#))

- How about a little game of Jeopardy? ([.pptx](#))

week 3: **3 comparative method** as major approach ([.pptx](#))

week 6: **4 holism** as a primary theoretical goal ([.pptx](#))

- Anthropology and its **Parts Chart** ([.pptx](#))
 - Enlarged Chart: ["Anthropology and . . . It's Parts"](#)

week 6: **5 fieldwork** as a primary research technique ([.pptx](#))

week 10: **"Other Important Terms"** ([.pptx](#))

week 11: **Units of Analysis** ([.pptx](#))

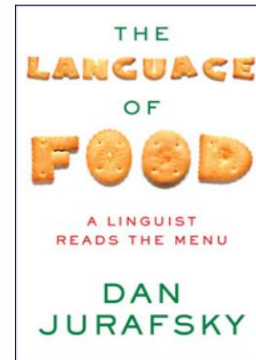
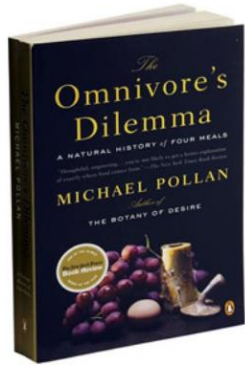
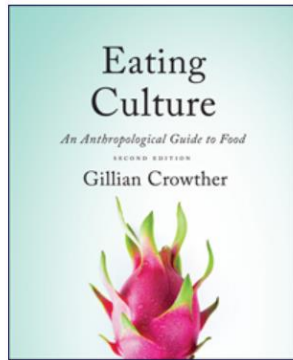
week 12: **Three Major Perennial Debates** ([.pptx](#))

(NOTE: These are long slide decks as they cover more than 2000+ years. Please bear with it to the end. And it will take a little longer to load, so please bear with that also. Also see note on slide formats.)

READINGS FOR WEEK 14 . . .

[Readings for the Semester](#)

[Textbook Information](#)



- ***Eating Culture, Second Edition*, Gillian Crowther**

- (Review)

- ***Omnivore's Dilemma*, Michael Pollan**

- Ch. 12, "Slaughter: in a glass abattoir"
 - Ch. 13, "The market: 'greetings from non-barcode people'"
 - Ch. 14, "The meal: grass-fed"

- ***The Language of Food*, Dan Jurafsky**

- (Review)

OTHER ASSIGNMENT INFORMATION . . .

Main Due Dates[↗](#)

†2022 [Module 14 – Week 14](#)[↗](#)

REM: Course Survey
(from ITSS)



The friendly folks from the UM Office of Measurement Services will be sending you an Invitation and Reminder to Participate in an online Course Evaluation.

Evaluations are important to me, the Department Head, and the Dean, as well as everyone in our Department.

Please fill out the online Student Rating of Teaching (SRT) carefully.

Evaluations are anonymous and will not be seen by the instructor until final grades for this course have been recorded, and then only aggregate information from the entire class will be passed onto the faculty member.

Your input will help improve this course.

Thanks,

Tim Roufs

For assistance: eval@umn.edu or 1-HELP

For SRT information: <http://oms.umn.edu/srt>

Office of Measurement Services, 879 29th Ave SE, Minneapolis, MN 55414 [privacy statement](#)

DUE: FINAL EXAM *Question . . .*

Saturday, 3 December 2022

f2022 **[DUE: AF SUBMIT Final Exam *Question* in this DROPBOX](#)**
(after annotation these will be your STUDY QUESTIONS)

PROJECT INFORMATION . . .

[Basic Information](#)

[Main Due Dates](#)

Student Presentations

(Review 3 - 5)

DUE: **Your Term Paper**

Saturday, 3 December 2022

f2022 DUE: **AF Wk 14 TERM PAPER DROPBOX**
[SUBMIT TERM PAPERS HERE] (Project Part 4)

f2022 REM: AF [Check the UNITS OF ANALYSIS](#) (.pptx) that you are using for Your Project--
compare them to the Units of Analysis described in the slides deck

f2022 REM: AF [Does your Project take a HOLISTIC VIEW of your Subject? If You Need to . . .](#)
Review Holism (.pptx)

f2022 REM: AF [Check Your Project. How does your Project incorporate the "FOUR FIELD" APPROACH?](#)



Charles Dickens (1842)
Francis Alexander (1800-1880)
[Wikipedia](#)

Details are at . . .

<https://www.d.umn.edu/cla/faculty/troufs/anthfood/afterm_paper.html#title>

[click ↑ here]

As I mentioned last week and throughout the semester a major part of this course is your **research project**—not just for the points, but because researching a topic you are interested in, and presenting your findings to others, and then writing the results up as a formal paper, is one of the best ways to learn things, *and* it gives you valuable practice for presenting your ideas and

arguments.

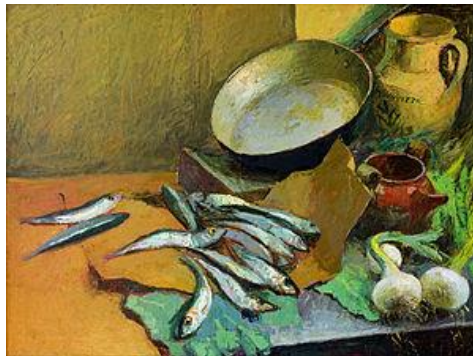
DUE: DISCUSSION WEEK 14 . . .

(optional) [Online Discussions Information, Rubric, and Sample Posts](#)

American Indian Fishing and Whaling Rights, and Inuit Seal-Trading Rights

For Fun Food Trivia for the Week . . .

**“How many pounds of anchovies
does it take to produce one pound of fish-farmed salmon?”**



[Answer](#)

(optional) **EXTRA CREDIT . . .**

[Basic Extra Credit Information](#)

Optional Extra Credits were Due Last Week

The Grind

Case Study

Lecture/Video/Event Review

OTHER (OPTIONAL) . . .

QUESTIONS? / COMMENTS . . .

If you have any **questions or comments** right now, please do not hesitate to post them on the  canvas “Discussions”, or e-mail troufs@d.umn.edu, or ZOOM <https://umn.zoom.us/my/troufs>. (E-mail is fastest, and most generally best as quite often URLs need be sent.)

Best Wishes,

Tim Roufs

<http://www.d.umn.edu/~troufs>

<https://umn.zoom.us/my/troufs>

[other contact information](#)